

marzocchi
WWW.MARZOCCHI.COM

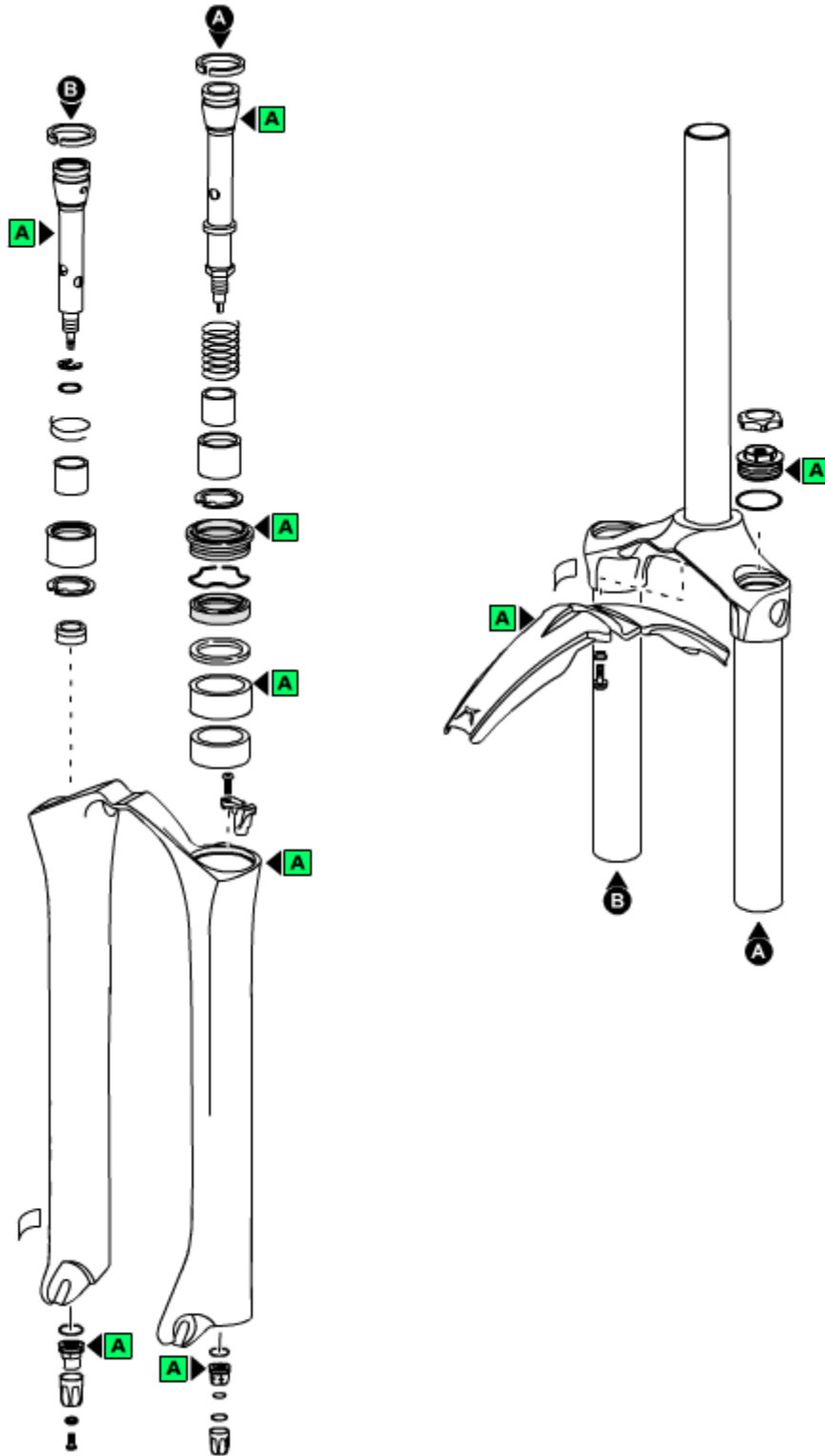


2006 - All Mountain II

Technical instructions

Exploded view - All Mountain II - 130

BOMBARDIER



| Rif. Code | Quantity |
|----------------|----------|
| 1 818352/E | 1 |
| 1 818352/A | 1 |
| 1 818352/R | 1 |
| 2 549072KR | 2 |
| 3 701211/C | 2 |
| 4 528226 | 2 |
| 8 8031445/C | 1 |
| 9 524177 | 2 |
| 10 5141420/C | 1 |
| 10 520341 | 1 |
| 11 5321153>A | 1 |
| 12 533297 | 2 |
| 13 523261 | 2 |
| 14 528230>A | 2 |
| 15 538115 | 1 |
| 16 538114 | 2 |
| 19 5321365SS/C | 1 |
| 19 5321365RR/C | 1 |
| 19 5321365SR/C | 1 |
| 19 5321365RS/C | 1 |
| 20 547681 | 1 |
| 20 547680 | 1 |
| 26 528046 | 2 |
| 27 5321320>A | 1 |
| 28 528297 | 1 |
| 29 549089>A | 1 |
| 30 520313 | 1 |
| 31 549067 | 1 |
| 32 5321129>A | 1 |
| 33 5141283>A | 1 |
| 34 512105 | 1 |
| 35 547705 | 1 |
| 35 547716 | 1 |
| 36 522403>A | 2 |
| 37 547713 | 1 |
| 37 547708 | 1 |
| 38 508995/C | 1 |
| 38 508963CD/R | 1 |
| 40 528223 | 1 |
| 41 523011 | 1 |
| 43 8031401/C | 1 |
| 46 5181181 | 2 |
| 48 509150 | 1 |
| 49 805021 | 1 |
| 50 523300 | 2 |
| 51 528030 | 1 |
| 55 8501029/C | 1 |
| 56 526143RX | 2 |
| 57 520342AR | 2 |

Spare part list - All Mountain II - 130

| Rif. | Code | Description | Q.ty in the model |
|------|---------------------------------|---------------------------------------|-------------------|
| 1 | 818352/E | CROWN+STANC+ALLOY STEM AM2 '06 | 1 |
| 1 | 818352/A | CROWN+STANC+STEEL STEM AM2 '06 | 1 |
| 1 | 818352/R | CROWN+STANCHIONS AM2 '06 | 1 |
| 2 | 549072KR | ALUMINUM RED KNOB | 2 |
| 3 | 701211/C | PLUG UNIT | 2 |
| 4 | 528226 | O-RING | 2 |
| 8 | 8031445/C | COMPR.PISTON ROD AM2'06 TR 130 | 1 |
| 9 | 524177 | PISTON RING | 2 |
| 10 | 5141420/C | REB.SPRINGS 15MM KIT K=4.5 | 1 |
| 10 | 520341 | SCREW | 1 |
| 11 | 5321153>A | CABLE GUIDE | 1 |
| 12 | 533297 | DUST SEAL DIA.32 | 2 |
| 13 | 523261 | STOP RING | 2 |
| 14 | 528230>A | OIL SEAL DIA.32 | 2 |
| 15 | 538115 | UPPER BUSHING DIA.32 | 1 |
| 16 | 538114 | LOWER BUSHING DIA.32 | 2 |
| 19 | 5321365SS/C | ALL MOU.'06 MONOL-MAGNUM GREY | 1 |
| 19 | 5321365RR/C | ALL MOU.'06 MONOL.-FLAT BLACK | 1 |
| 19 | 5321365SR/C | ALL MOU.'06 MONOL.-SILVER DUST | 1 |
| 19 | 5321365RS/C | ALL MOU.'06 MONOLITE-ECO BLACK | 1 |
| 20 | 547681 | RH+LH AM2 '06 LABELS-WHIT+RED | 1 |
| 20 | 547680 | RH+LH AM2 '06 LABELS-WHIT+YELL | 1 |
| 26 | 528046 | O-RING | 2 |
| 27 | 5321320>A (replaces 5321320) | NUT UNIT | 1 |
| 28 | 528297 | O-RING | 1 |
| 29 | 549089>A (replaces 549089KR) | PLASTIC KNOB | 1 |
| 30 | 520313 | SCREW | 1 |
| 31 | 549067 | ADJUSTER | 1 |
| 32 | 5321129>A | FOOT NUT UNIT | 1 |
| 33 | 5141283>A (replaces 5141283) | REBOUND SPRING 82MM | 1 |
| 34 | 512105 | FOOT BUFFER | 1 |
| 35 | 547705 | ALLOY STEM -LABELS | 1 |
| 35 | 547716 | VF2 LABEL | 1 |
| 36 | 522403>A | WASHER | 2 |
| 37 | 547713 | EXT.REBOUND ADJ.MTB'06 LABEL | 1 |
| 37 | 547708 | EXTER.COMPRESS.ADJUST.-LABEL | 1 |
| 38 | 508995/C (replaces 508993/C) | REINFORCED ALLOY STEM+++ | 1 |
| 38 | 508963CD/R | STEEL STEER TUBE D.30 | 1 |
| 40 | 528223 | O-RING | 1 |
| 41 | 523011 | STOP RING | 1 |
| 43 | 8031401/C | REB.PISTON ROD AM2 '06 TR.130 | 1 |
| 46 | 5181181 | PRELOAD SLEEVE 20MM LONG | 2 |
| 48 | 509150 | COMPRESS.FERRULE '06 | 1 |
| 49 | 805021 | FERRULE+ VALVE UNIT | 1 |
| 50 | 523300 | STOP RING | 2 |

| | | | |
|----|-----------|-------------------------------------|---|
| 51 | 528030 | O-RING | 1 |
| 55 | 8501029/C | ALL MOUNTAIN '06 FENDER UNIT | 1 |
| 56 | 526143RX | FENDER BUSHINGS | 2 |
| 57 | 520342AR | FENDER SCREW | 2 |

Spare part list - All Mountain II - 150

| Rif. | Code | Description | Q.ty in the model |
|------|---------------------------------|---------------------------------------|-------------------|
| 1 | 818352/E | CROWN+STANC+ALLOY STEM AM2 '06 | 1 |
| 1 | 818352/A | CROWN+STANC+STEEL STEM AM2 '06 | 1 |
| 1 | 818352/R | CROWN+STANCHIONS AM2 '06 | 1 |
| 2 | 549072KR | ALUMINUM RED KNOB | 2 |
| 3 | 701211/C | PLUG UNIT | 2 |
| 4 | 528226 | O-RING | 2 |
| 8 | 8031445/C | COMPR.PISTON ROD AM2'06 TR 130 | 1 |
| 9 | 524177 | PISTON RING | 2 |
| 10 | 5141420/C | REB.SPRINGS 15MM KIT K=4.5 | 1 |
| 10 | 520341 | SCREW | 1 |
| 11 | 5321153>A | CABLE GUIDE | 1 |
| 12 | 533297 | DUST SEAL DIA.32 | 2 |
| 13 | 523261 | STOP RING | 2 |
| 14 | 528230>A | OIL SEAL DIA.32 | 2 |
| 15 | 538115 | UPPER BUSHING DIA.32 | 1 |
| 16 | 538114 | LOWER BUSHING DIA.32 | 2 |
| 18 | 850776/C | BUSHINGS DIA 32 KIT | 0 |
| 19 | 5321365SS/C | ALL MOU.'06 MONOL-MAGNUM GREY | 1 |
| 19 | 5321365RR/C | ALL MOU.'06 MONOL.-FLAT BLACK | 1 |
| 19 | 5321365SR/C | ALL MOU.'06 MONOL.-SILVER DUST | 1 |
| 19 | 5321365RS/C | ALL MOU.'06 MONOLITE-ECO BLACK | 1 |
| 20 | 547681 | RH+LH AM2 '06 LABELS-WHIT+RED | 1 |
| 20 | 547680 | RH+LH AM2 '06 LABELS-WHIT+YELL | 1 |
| 26 | 528046 | O-RING | 2 |
| 27 | 5321320>A (replaces 5321320) | NUT UNIT | 1 |
| 28 | 528297 | O-RING | 1 |
| 29 | 549089>A (replaces 549089KR) | PLASTIC KNOB | 1 |
| 30 | 520313 | SCREW | 1 |
| 31 | 549067 | ADJUSTER | 1 |
| 32 | 5321129>A | FOOT NUT UNIT | 1 |
| 33 | 5141283>A (replaces 5141283) | REBOUND SPRING 82MM | 1 |
| 34 | 512105 | FOOT BUFFER | 1 |
| 35 | 547705 | ALLOY STEM -LABELS | 1 |
| 35 | 547716 | VF2 LABEL | 1 |
| 36 | 522403>A | WASHER | 2 |
| 37 | 547713 | EXT.REBOUND ADJ.MTB'06 LABEL | 1 |
| 37 | 547708 | EXTER.COMPRESS.ADJUST.-LABEL | 1 |
| 38 | 508995/C (replaces 508993/C) | REINFORCED ALLOY STEM+++ | 1 |
| 38 | 508963CD/R | STEEL STEER TUBE D.30 | 1 |
| 40 | 528223 | O-RING | 1 |
| 41 | 523011 | STOP RING | 1 |
| 43 | 8031401/C | REB.PISTON ROD AM2 '06 TR.130 | 1 |
| 48 | 509150 | COMPRESS.FERRULE '06 | 1 |
| 49 | 805021 | FERRULE+ VALVE UNIT | 1 |
| 50 | 523300 | STOP RING | 2 |

| | | | |
|----|-----------|-------------------------------------|---|
| 51 | 528030 | O-RING | 1 |
| 55 | 8501029/C | ALL MOUNTAIN '06 FENDER UNIT | 1 |
| 56 | 526143RX | FENDER BUSHINGS | 2 |
| 57 | 520342AR | FENDER SCREW | 2 |

Technical characteristics: Technical characteristics

Single-crown fork with \varnothing 30mm legs.

Available travels: 130mm, 150 mm.

Right fork leg damping element: air.

Left fork leg damping element: air.

Right fork leg damping system: VF2 pumping element with external rebound adjustment.

Left fork leg damping system: Pumping rod with compression setting by external adjuster.

The stanchion tubes are pressed into the crown with a cryogenic process.

Lubrication and cooling of the parts subject to friction with a specially formulated oil.

Steer tube: steel or (optional) reinforced aluminium, 1-1/8", threadless.

Crown: aluminium alloy forged and CNC machined.

Stanchions: anodised aluminium.

One-piece assembly: made of magnesium alloy cast and CNC machined for lighter weight and more stiffness.

Sliding bushings: made of friction-free and wear-free material.

Seals: computer designed oil seals that guarantee maximum seal in any condition.

Oil: specially formulated oil that prevents foam and keeps the viscosity unchanged while offering high performance; free from static friction.

Dropout type: standard.

Disk brake mount: Post Mount for 6" disk.

Max wheel size: 2.8" x 26".

Tightening torques

| Components | Tightening torque (Nm) |
|---------------------------------------|------------------------|
| Adjuster locking screws | 2±0,5 |
| Fender fixing screws | 6±1 |
| Fork leg top caps | 10±1 |
| Pumping element/cartridge bottom nuts | 10±1 |

Air pressures

Positive air pressure

| User weight | | Air pressure | |
|-------------|-----------|--------------|---------------------|
| kg. | lb. | bar | psi |
| 55 - 70 | 121 - 154 | 2,00 - 2,75 | 2.900,00 - 3.987,50 |
| 70 - 80 | 154 - 176 | 2,40 - 3,10 | 3.480,00 - 4.495,00 |
| 80 - 95 | 176 - 209 | 2,90 - 3,80 | 4.205,00 - 5.510,00 |
| 95 - 110+ | 209 - 242 | 3,60 - 4,50 | 5.220,00 - 6.525,00 |

All Mountain II - 130 -
All Mountain II - 150 -

Diagnostics

| Finding the problem | Finding the possible cause | Possible solutions proposed |
|---|--|--|
| Fork doesn't get full travel | Oil level too high | Check oil levels |
| Fork doesn't get full travel | Spring rate too stiff | Change to softer spring rate |
| Fork extends too quickly; harsh top-out after impacts | Rebound damping is not enough | Increase rebound damping |
| Fork extends too quickly; harsh top-out after impacts | Rebound damping is not enough | Replace the oil (SAE 7.5) with one of higher viscosity index |
| Fork has too much sag | Oil is too fluid | Check oil levels |
| Fork has too much sag | Spring rate too soft | Change to stiffer spring rate |
| Fork has too much sag | Spring rate too soft | Increase spring preload by replacing the preload tube |
| Fork is "sticky"; fork does not perform as new | Dirty sealing rings; fork needs to be serviced | Renew all seals |
| Fork is too soft, but the sag is the one recommended | Compression damping is not enough | Increase compression damping by changing oil volumes |
| Fork is too soft, needs more than the maximum preload | Oil is too fluid | Check oil levels |
| Fork is too soft, needs more than the maximum preload | Spring rate too soft | Change to stiffer spring rate |
| Fork stays down or "packs up" during multiple impacts | Rebound damping is too high | Decrease rebound damping with the relevant register |
| Front wheel tends to tuck under while turning left or right | Rebound damping is too high | Decrease rebound damping with the relevant register |
| Front wheel tends to tuck under while turning left or right | Spring rate too soft | Change to stiffer spring rate |
| Heavy amount of oil on stanchions; oil dripping down legs | Sealing rings damaged | Renew all seals |
| Heavy amount of oil on stanchions; oil dripping down legs | The stanchion tubes could be damaged | Have the stanchions be checked |
| Knocking sound during rebound, but no harsh top-out | Rebound damping is too high | Decrease rebound damping with the relevant register |
| Loss of sensitivity | Old oil | Change the oil |
| Loss of sensitivity | Sliding bushes worn | Renew the sliding bushes |
| Oil leaking from the bottom of the fork leg | Bottom nut/screw loose | Tighten the nut or screw |
| Oil ring on stanchions | Sealing rings dirty | Renew all seals |